



Nitrate vulnerable zone designation 2012 (Groundwater)

Mae fersiwn Cymraeg o'r ddogfen hon ar gael

A Welsh version of this document is also available

Version 1.1, revised 27 June 2012

Evidence of Groundwater Water Nitrate Pollution 2012

INTRODUCTION

This document is intended to provide a summary of the evidence used in assessing the need for nitrate vulnerable zone (NVZ) designation under the Nitrates Directive reference(91/676/EEC of 12th Decmeber 1991). A full description of the methods used is given in the detailed methodologies for Surface Water, Groundwater and Eutrophic Water reports which are available from the Defra and Welsh Government websites. These methods were developed under the guidance of a Review Group convened by the Defra and the Welsh Government which included representatives from the farming and water industries as well as independent academic experts.

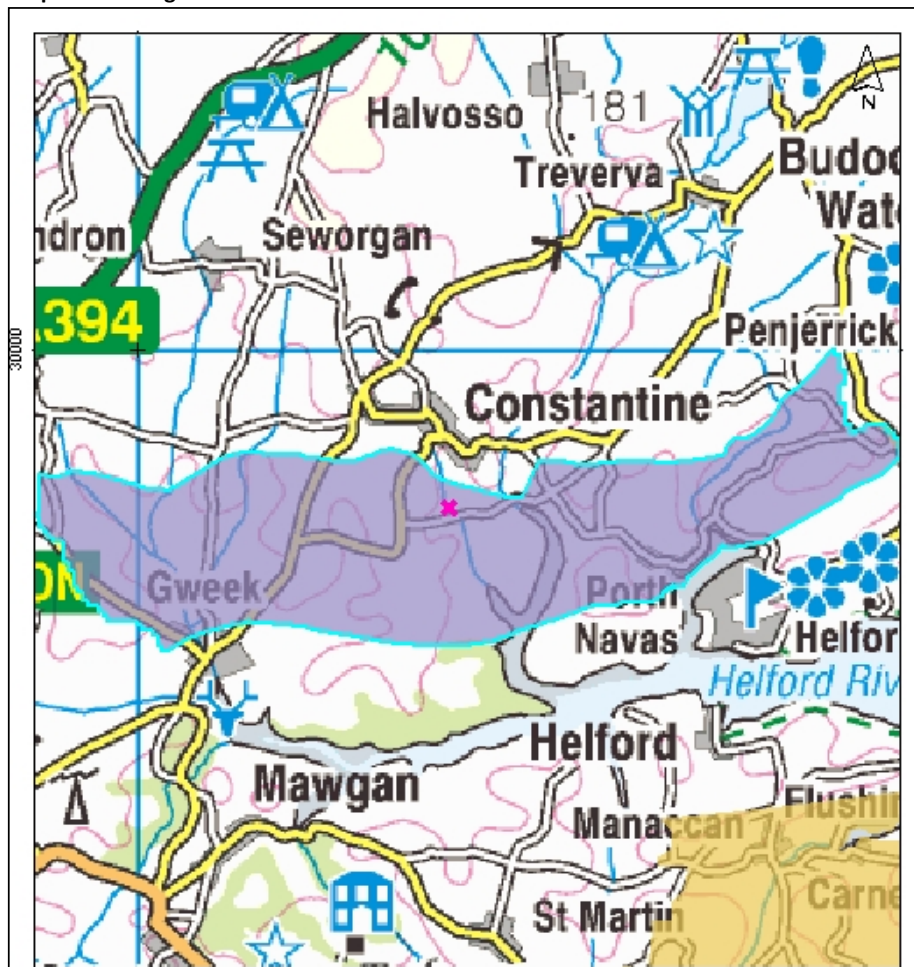
NVZ areas are designated based on a combination of both monitored water quality data and modelled nitrogen loadings that are based on the agricultural census and other data.

The concentration data is presented as milligrams of Nitrogen per litre. Please note 50 mg per litre of Nitrate is equivalent to 11.3 mg per litre as Nitrogen (N). Monitoring sites which exceed the concentration of 11.3 mg N/l set by the Nitrates Directive may lead to designation of all land draining to this point.

Note that for land already designated as a groundwater NVZ prior to this assessment, the land will remain designated even if the 95%ile concentration is now below 11.3 mg N/l. At least two cycles of low Nitrate concentrations are needed to show a sustained decrease that would then be considered for removal from NVZ designation.

For each NVZ area, monitoring data in combination with information on land-use indicate that concentrations of nitrates in one or more groundwaters are likely to exceed the level set out in the EU Nitrates Directive. Agricultural sources are likely to make a significant contribution to the observed or expected concentration of nitrate. Hence the land area draining to these groundwaters has been identified for designation as a Nitrate Vulnerable Zone.

Map of the designated area.



Contains Ordnance Survey data © Crown copyright and database right 2012

Legend

-  Groundwater NVZ newly designated in 2012
-  Groundwater NVZ designated before 2012 and continuing as designated in 2012
-  Groundwater Monitoring sites

Description of the boundary

Surface Water Zone designations are applied at a waterbody scale, for groundwater zones, other factors such as geology need to be taken into account. Physical boundaries influencing groundwater NVZs delineation have been defined based on expert discussion at local level. The following represents a selection of the types of boundaries that have been used to delineate the NVZs and determine the land draining to a polluted groundwater.

- Geological boundaries such as faults and geological contacts.
- Surface water catchment boundaries.
- Groundwater level contours.
- High permeability drift outcrops.
- Low permeability drift outcrops.
- Rivers, acting as groundwater catchment divides.
- Coastlines.
- Solution features.

For NVZ area 154 the boundary is based on;

Nancenoy (ID 154) The boundaries of the NVZ follows the Mylor Slate formation (MRSL-SLAS and MRSL-HSSL) limited by surface WB GB108048001830 and GB108048001790 to the East and GB108048001860 to the West.

ID of monitoring site(s):

81910014

Previously designated area, new area or new area adjacent to previously designated area: *New designated area*

Total new area designated (Km2): *12.39*

Monitored Nitrate data for sites in zone ID: 154

For the 2012 designations monitoring data was analysed where available for the years 1980 - 2009. Where sufficient data was available results were projected to give a predicted concentration in 2027. For the earlier 2008 designation, monitoring data was analysed to 2006 and trend predicted to 2021. The results of the analysis were then compared to the standard of a 95%ile value of 11.3 mg N /l. See section 3 of the Groundwater Methodology report for more details.

The following tables summarise the nitrate concentrations for monitoring sites that either exceed the threshold or show increasing trend for nitrate. Data for these and other nearby sites are presented in Appendix A

This area was designated in 2012.

Results for 2012 monitoring data.

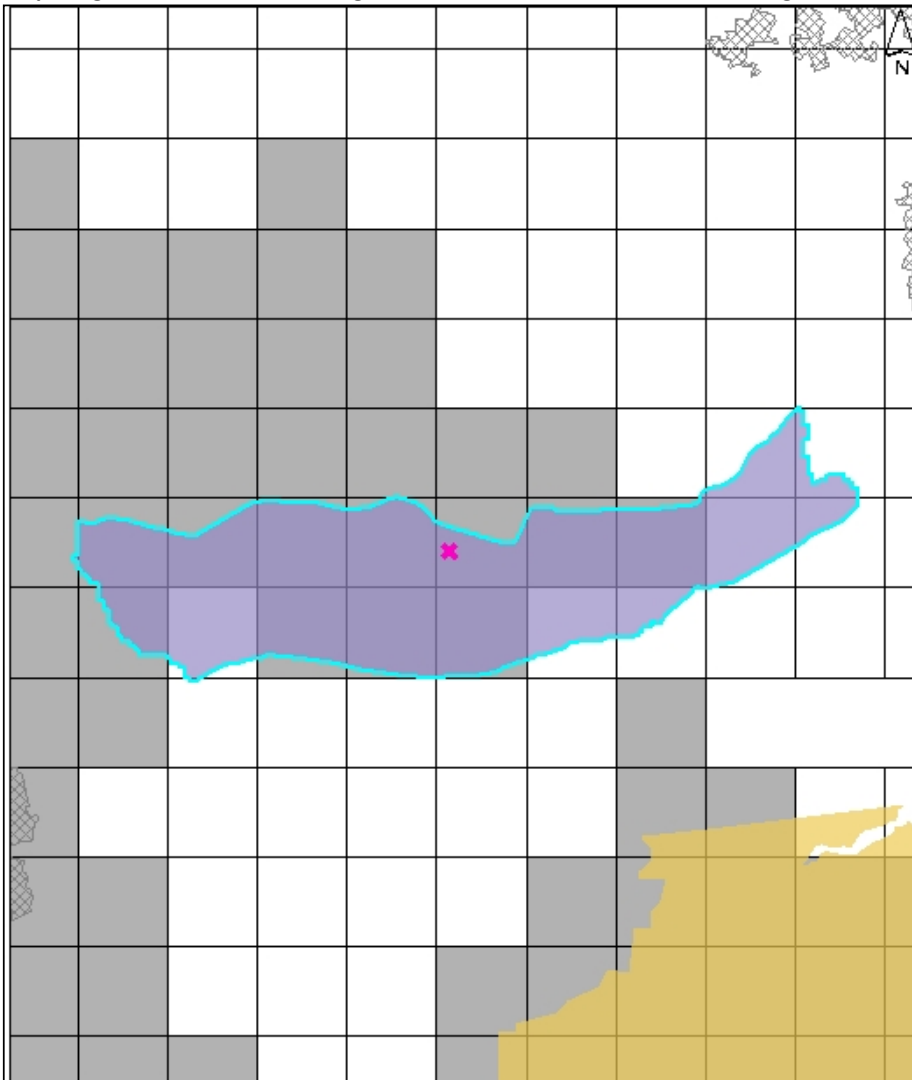
<i>Monitoring Site ID</i>	81910014
<i>Easting</i>	173150
<i>Northing</i>	28390
<i>Total Inorganic Nitrogen concentration 95%ile (mg/l)</i>	22.12
<i>Future predicted 95%ile Total Inorganic Nitrogen estimate (mg/l)</i>	45.22
<i>Trend (upward, downward, stagnation):</i>	Upward

Land Use Model results

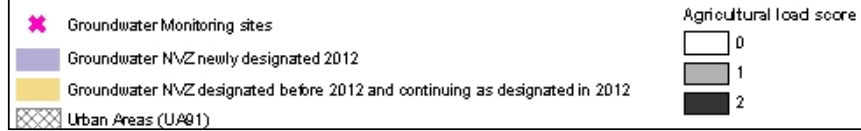
Urban and agricultural load were included in the assessment to identify if agriculture provides a main contribution of nitrate to the groundwater.

The following maps and associated figures indicate the annual average concentration of nitrate from agriculture contained in soil water. The figures are derived from farm scale research undertaken for Defra and are extrapolated based on farming land-use data for the land area covered by this report obtained in 2010 and long-term average rainfall based, using a model called NEAP-N developed by ADAS. The maps indicate those areas within the catchment with higher or lower levels of potential agricultural nitrate leaching to the groundwater.

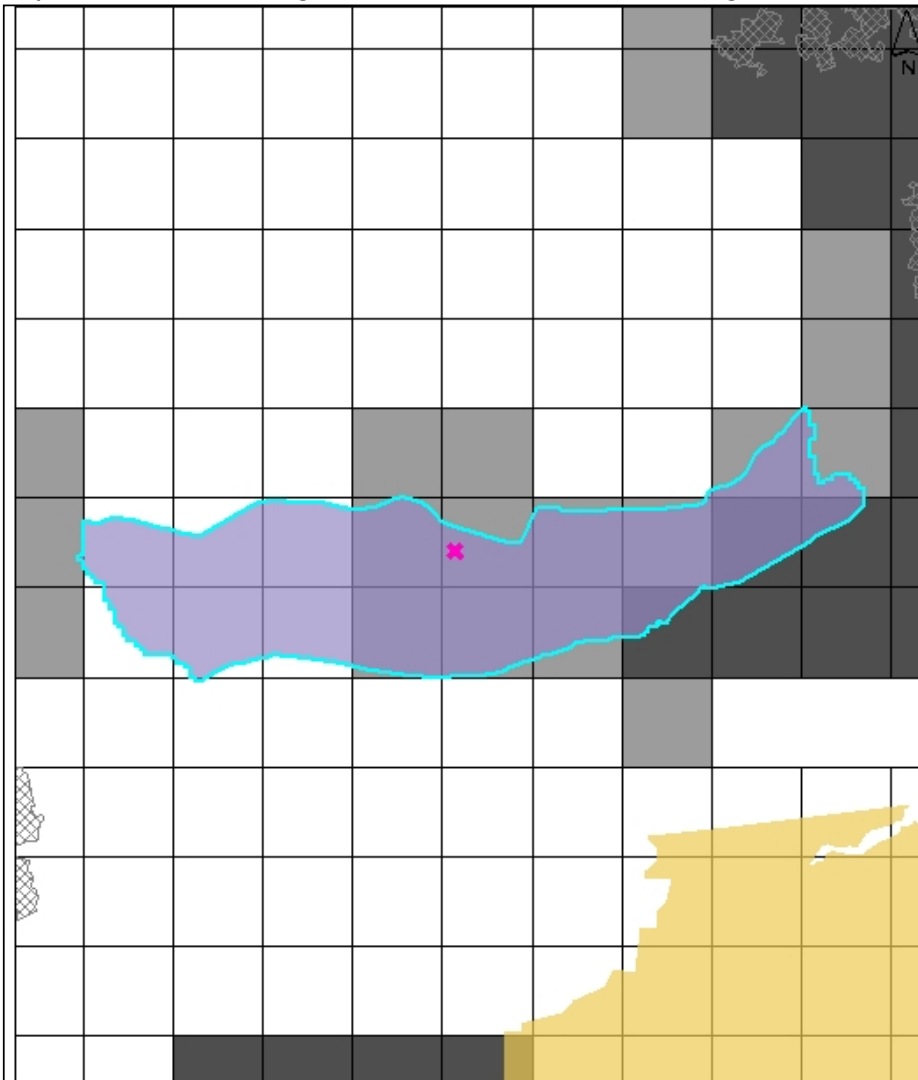
Map of agricultural load in the designated area. Load score is shown on 1km2 grid.



Contains Ordnance Survey data © Crown copyright and database right 2012



Map of urban load in the designated area. Load score is shown on 1km² grid.



Contains Ordnance Survey data © Crown copyright and database right 2012



Additional Lines of evidence

Advice was sought from local Environment Agency staff to identify any additional data that could be used in the risk model to improve the robustness of the decision making process. Examples include the location of point sources (e.g. industrial or septic discharges), monitoring data from different groundwater bodies and monitoring data from related surface waters. See section 6 of the Groundwater Methodology report for more details.

For this area, no lines of evidence have been modified from local Environment Agency staff.

Appendix A: Environment Agency monitoring data

This appendix presents historical concentration data at every monitoring site. For the 2012 designation, samples collected before 1980 were excluded because they may not be indicative of present day groundwater quality.

Monitoring point ID	Easting	Northing	Date	Nitrate (mg N / l)
81910014	173150	28390	07/03/2002	17.3
81910014	173150	28390	08/11/2002	16.4
81910014	173150	28390	16/10/2003	17.3
81910014	173150	28390	22/04/2004	17.3
81910014	173150	28390	01/02/2005	17.9
81910014	173150	28390	30/11/2005	17.4
81910014	173150	28390	20/02/2006	17.3
81910014	173150	28390	19/10/2006	17
81910014	173150	28390	12/02/2007	25.9
81910014	173150	28390	06/12/2007	19.6
81910014	173150	28390	13/02/2008	21.4
81910014	173150	28390	17/11/2008	20.1
81910014	173150	28390	20/02/2009	22.5
81910014	173150	28390	30/10/2009	22.4

References

<http://www.defra.gov.uk/food-farm/land-manage/nitrates-watercourses/nitrates/>

**Would you like to find out more about us,
or about your environment?**

Then call us on

08708 506 506* (Mon-Fri 8-6)

email

enquiries@environment-agency.gov.uk

or visit our website

www.environment-agency.gov.uk

incident hotline 0800 80 70 60 (24hrs)

floodline 0845 988 1188

* Approximate call costs: 8p plus 6p per minute (standard landline).
Please note charges will vary across telephone providers



Environment first: This publication is printed on recycled paper.