



Nitrate vulnerable zone designation 2012 (Groundwater)

Mae fersiwn Cymraeg o'r ddogfen hon ar gael

A Welsh version of this document is also available

Version 1.1, revised 27 June 2012

Evidence of Groundwater Water Nitrate Pollution 2012

INTRODUCTION

This document is intended to provide a summary of the evidence used in assessing the need for nitrate vulnerable zone (NVZ) designation under the Nitrates Directive reference(91/676/EEC of 12th Decmeber 1991). A full description of the methods used is given in the detailed methodologies for Surface Water, Groundwater and Eutrophic Water reports which are available from the Defra and Welsh Government websites. These methods were developed under the guidance of a Review Group convened by the Defra and the Welsh Government which included representatives from the farming and water industries as well as independent academic experts.

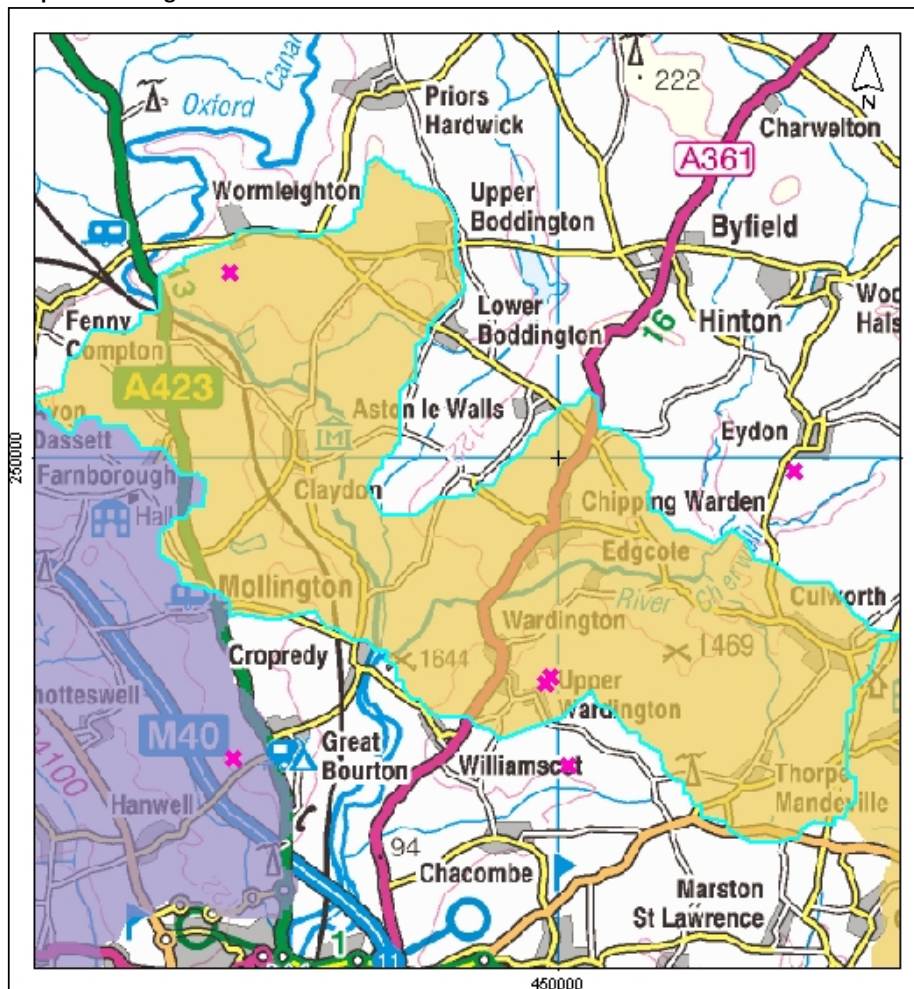
NVZ areas are designated based on a combination of both monitored water quality data and modelled nitrogen loadings that are based on the agricultural census and other data.

The concentration data is presented as milligrams of Nitrogen per litre. Please note 50 mg per litre of Nitrate is equivalent to 11.3 mg per litre as Nitrogen (N). Monitoring sites which exceed the concentration of 11.3 mg N/l set by the Nitrates Directive may lead to designation of all land draining to this point.

Note that for land already designated as a groundwater NVZ prior to this assessment, the land will remain designated even if the 95%ile concentration is now below 11.3 mg N/l. At least two cycles of low Nitrate concentrations are needed to show a sustained decrease that would then be considered for removal from NVZ designation.

For each NVZ area, monitoring data in combination with information on land-use indicate that concentrations of nitrates in one or more groundwaters are likely to exceed the level set out in the EU Nitrates Directive. Agricultural sources are likely to make a significant contribution to the observed or expected concentration of nitrate. Hence the land area draining to these groundwaters has been identified for designation as a Nitrate Vulnerable Zone.

Map of the designated area.



Contains Ordnance Survey data © Crown copyright and database right 2012

Legend

-  Groundwater NVZ newly designated in 2012
-  Groundwater NVZ designated before 2012 and continuing as designated in 2012
-  Groundwater Monitoring sites

Description of the boundary

Surface Water Zone designations are applied at a waterbody scale, for groundwater zones, other factors such as geology need to be taken into account. Physical boundaries influencing groundwater NVZs delineation have been defined based on expert discussion at local level. The following represents a selection of the types of boundaries that have been used to delineate the NVZs and determine the land draining to a polluted groundwater.

- Geological boundaries such as faults and geological contacts.
- Surface water catchment boundaries.
- Groundwater level contours.
- High permeability drift outcrops.
- Low permeability drift outcrops.
- Rivers, acting as groundwater catchment divides.
- Coastlines.
- Solution features.

For NVZ area 82 the boundary is based on;

Warmington NVZ (ID 82) The surface water catchments which contain the monitoring points for this NVZ both drain to the central main river surface water catchment and are linked indirectly through this. The surface water suffers from high nitrate and has been designated as a surface water NVZ as well.

ID of monitoring site(s):

PGWU0667, PGWU1849

Previously designated area, new area or new area adjacent to previously designated area: *Previously designated area*

Total new area designated (Km2): *60.22*

Monitored Nitrate data for sites in zone ID: 82

For the 2012 designations monitoring data was analysed where available for the years 1980 - 2009. Where sufficient data was available results were projected to give a predicted concentration in 2027. For the earlier 2008 designation, monitoring data was analysed to 2006 and trend predicted to 2021. The results of the analysis were then compared to the standard of a 95%ile value of 11.3 mg N /l. See section 3 of the Groundwater Methodology report for more details.

The following tables summarise the nitrate concentrations for monitoring sites that either exceed the threshold or show increasing trend for nitrate. Data for these and other nearby sites are presented in Appendix A

This area was designated in 2008.

Results for 2008 monitoring data.

<i>Monitoring Site ID</i>	PGWU1849
<i>Easting</i>	449879
<i>Northing</i>	246405
<i>Total Inorganic Nitrogen concentration 95%ile (mg/l)</i>	28.59
<i>Future predicted 95%ile Total Inorganic Nitrogen estimate (mg/l)</i>	NA
<i>Trend (upward, downward, stagnation):</i>	NA

Results for 2012 monitoring data.

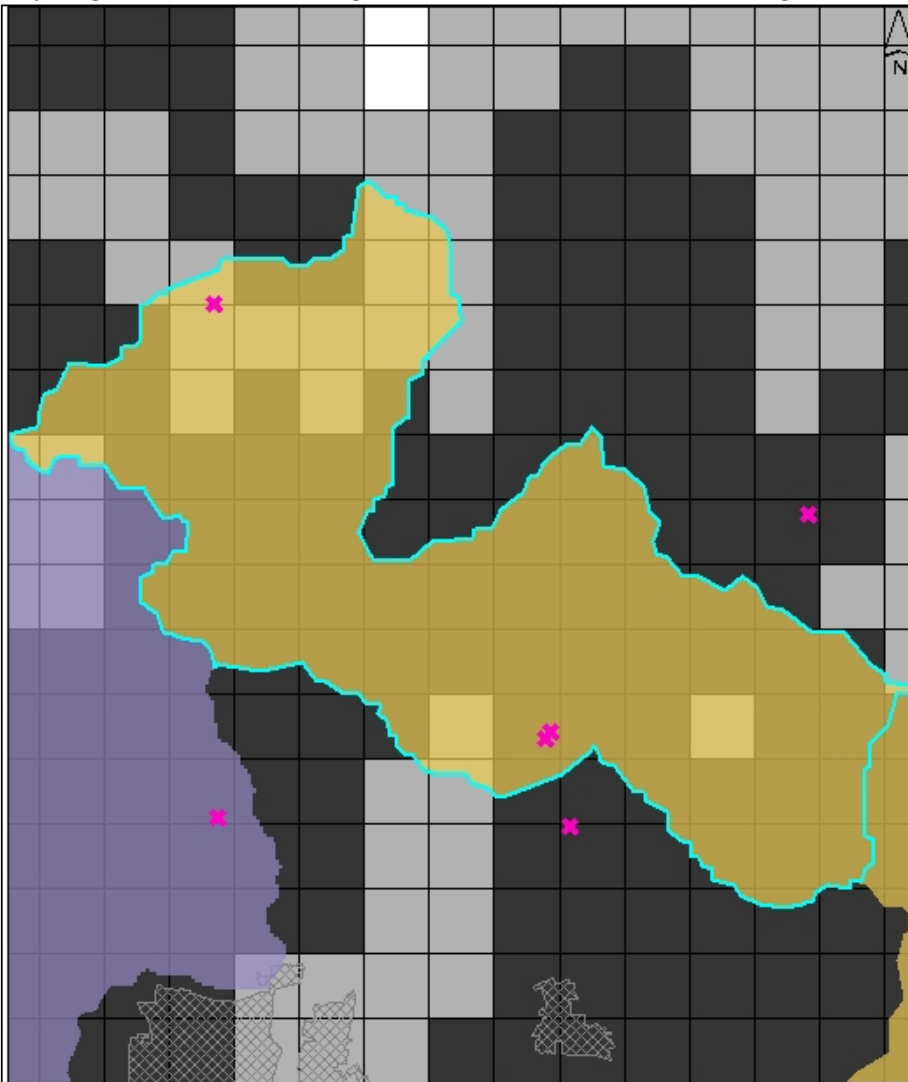
<i>Monitoring Site ID</i>	PGWU1849
<i>Easting</i>	449800
<i>Northing</i>	246300
<i>Total Inorganic Nitrogen concentration 95%ile (mg/l)</i>	28.01
<i>Future predicted 95%ile Total Inorganic Nitrogen estimate (mg/l)</i>	28.01
<i>Trend (upward, downward, stagnation):</i>	Stagnation

Land Use Model results

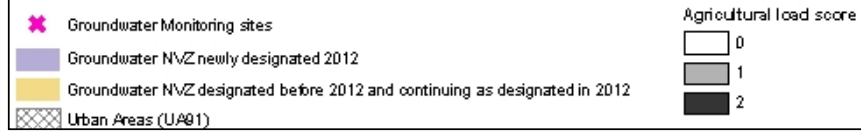
Urban and agricultural load were included in the assessment to identify if agriculture provides a main contribution of nitrate to the groundwater.

The following maps and associated figures indicate the annual average concentration of nitrate from agriculture contained in soil water. The figures are derived from farm scale research undertaken for Defra and are extrapolated based on farming land-use data for the land area covered by this report obtained in 2010 and long-term average rainfall based, using a model called NEAP-N developed by ADAS. The maps indicate those areas within the catchment with higher or lower levels of potential agricultural nitrate leaching to the groundwater.

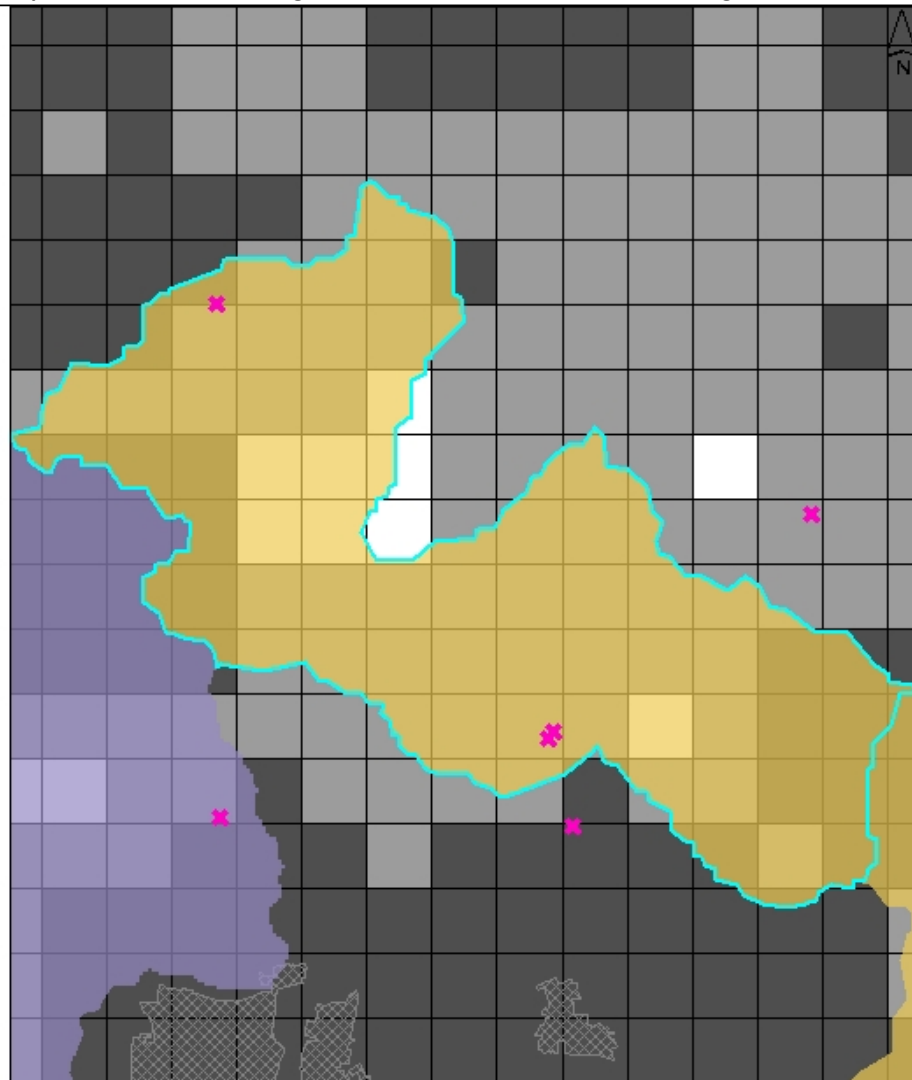
Map of agricultural load in the designated area. Load score is shown on 1km² grid.



Contains Ordnance Survey data © Crown copyright and database right 2012



Map of urban load in the designated area. Load score is shown on 1km2 grid.



Contains Ordnance Survey data © Crown copyright and database right 2012



Additional Lines of evidence

Advice was sought from local Environment Agency staff to identify any additional data that could be used in the risk model to improve the robustness of the decision making process. Examples include the location of point sources (e.g. industrial or septic discharges), monitoring data from different groundwater bodies and monitoring data from related surface waters. See section 6 of the Groundwater Methodology report for more details.

For this area, no lines of evidence have been modified from local Environment Agency staff.

Appendix A: Environment Agency monitoring data

This appendix presents historical concentration data at every monitoring site. For the 2012 designation, samples collected before 1980 were excluded because they may not be indicative of present day groundwater quality.

Monitoring point ID	Easting	Northing	Date	Nitrate (mg N / l)
PGWU0667	444700	253010	18/03/1993	28.2
PGWU0667	444700	253010	10/06/1993	32.9
PGWU0667	444700	253010	02/09/1993	34.7
PGWU0667	444700	253010	23/11/1993	36.5
PGWU0667	444700	253010	17/03/1994	35.5
PGWU0667	444700	253010	09/06/1994	34.7
PGWU0667	444700	253010	01/09/1994	35.6
PGWU0667	444700	253010	21/11/1994	0.1
PGWU0667	444700	253010	16/03/1995	33.7
PGWU0667	444700	253010	18/05/1995	34.4
PGWU0667	444700	253010	21/08/1995	33.8
PGWU0667	444700	253010	15/11/1995	32.3
PGWU0667	444700	253010	04/03/1996	29
PGWU0667	444700	253010	02/05/1996	31.3
PGWU0667	444700	253010	13/03/1997	28.3
PGWU0667	444700	253010	20/05/1997	28
PGWU0667	444700	253010	12/02/1998	20.1
PGWU0667	444700	253010	30/04/1998	19.6
PGWU0667	444700	253010	18/05/1999	26.3
PGWU0667	444700	253010	16/05/2000	12.8
PGWU0667	444700	253010	19/12/2000	26.8
PGWU0667	444700	253010	13/05/2002	23.7
PGWU0667	444700	253010	28/11/2002	22.3
PGWU0667	444700	253010	30/06/2003	21
PGWU0667	444700	253010	19/11/2003	20.7
PGWU0667	444700	253010	24/06/2004	18.2
PGWU0667	444700	253010	12/05/2005	16.3
PGWU0667	444700	253010	16/06/2005	15.8
PGWU0667	444700	253010	25/08/2005	16.7
PGWU0667	444700	253010	10/04/2006	13.5
PGWU0667	444700	253010	16/06/2006	13.2
PGWU0667	444700	253010	04/09/2006	10.2
PGWU0667	444700	253010	15/11/2006	9.3
PGWU1849	449800	246300	09/12/2003	25.8
PGWU1849	449879	246405	09/12/2003	25.8
PGWU1849	449879	246405	12/05/2005	26.4
PGWU1849	449800	246300	12/05/2005	26.4
PGWU1849	449879	246405	16/06/2005	25.6
PGWU1849	449800	246300	16/06/2005	25.6
PGWU1849	449879	246405	16/06/2006	21.9
PGWU1849	449800	246300	16/06/2006	21.9
PGWU1849	449800	246300	04/09/2006	22.5
PGWU1849	449879	246405	04/09/2006	22.5
PGWU1849	449879	246405	15/11/2006	22.8
PGWU1849	449800	246300	15/11/2006	22.8
PGWU1849	449879	246405	19/03/2007	22.8
PGWU1849	449879	246405	25/06/2007	23.6
PGWU1849	449879	246405	02/10/2007	23.1
PGWU1849	449879	246405	17/10/2007	23.2
PGWU1849	449879	246405	06/03/2008	27.3
PGWU1849	449879	246405	16/06/2008	26.7

PGWU1849	449879	246405	18/09/2008	28.4
PGWU1849	449879	246405	25/03/2009	28.4
PGWU1849	449879	246405	29/06/2009	27.4
PGWU1849	449879	246405	30/09/2009	27.2

References

<http://www.defra.gov.uk/food-farm/land-manage/nitrates-watercourses/nitrates/>

**Would you like to find out more about us,
or about your environment?**

Then call us on

08708 506 506* (Mon-Fri 8-6)

email

enquiries@environment-agency.gov.uk

or visit our website

www.environment-agency.gov.uk

incident hotline 0800 80 70 60 (24hrs)

floodline 0845 988 1188

* Approximate call costs: 8p plus 6p per minute (standard landline).
Please note charges will vary across telephone providers



Environment first: This publication is printed on recycled paper.